



# Salma



COOLMAX®



SALMA-LBL



SALMA-LIC



SALMA-LGN



SALMA-FUX



SALMA-WHT



SALMA-BLK

The model **SALMA** is a trendy, comfortable closed shoe, fully adapted to the needs of healthcare professionals. The adjustable velcro straps on the back and top of the shoe ensure a firm fit. The closed heel increases the protection and safety. The soft part in Lycra avoids friction and irritation.

The *Move Up* collection is an ultra light design with antistatic properties and a slip resistant outsole. The breathable inner lining in Coolmax® keeps your feet cool and draws perspiration away from the skin. The outer material is leather and can easily be cleaned with a damp cloth. The anatomical shaped foot bed ensures a healthy support of the foot. This model has a 1.58 inch or 4 cm heel.



# Salma

CE-standard  
CE EN 20347 certified.



## Coolmax®-lining

Keeps your feet cool and draws perspiration away from the skin.



## Easy maintenance

The none lycra part of the shoe can easily be cleaned with a damp cloth.



## Shock absorbing

The midsole in EVA garantees shock absorption.



Elegant 1.58 inch /4 cm heel



Leather  
The outside of the shoe is leather.



## Ultra light

The midsole in EVA is very light, flexible and shock absorbing. The average shoe weight is 8.81 oz or 250 gram.



## Renewable insole

Renewable insole with Coolmax®. You can easily replace the insole regularly with our ultra comfortable insole OXYFOAM of use your own orthopedic insoles.



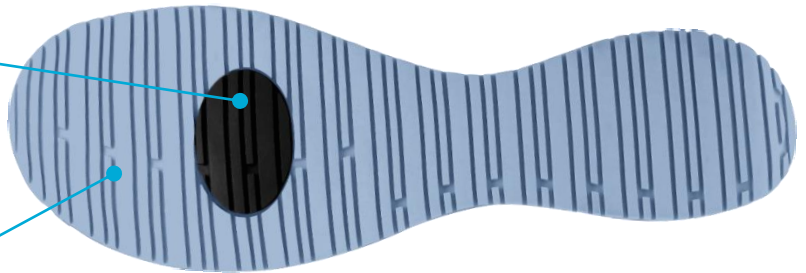
## Anti-static ESD

The shoe features a plug that improves the dissipation of static electricity and meets the ESD standard.



## Slip resistant SRC

The rubber outsole provides excellent grip, both on wet and dry floors and complies with the SRC standard.



## Usage

Suitable for those who walk and stand for a long time daily. So recommended for:

- Healthcare professionals
- Nurses and caregivers
- Wellness and beauty center professionals
- Homecare

Do not use to accompany patients into the shower.

## Sizes

EU	36	37	38	39	40	41	42
UK	3.5	4	5	5.5	6.5	7	8
US	6	6.5	7.5	8	9	9.5	10.5