



Anais



ANAIS-LIC



ANAIS-LGN



ANAIS-LBL



ANAIS-FUX



ANAIS-WHT

The model **ANAIS** is specially designed for healthcare professionals with a foot disorder like hallux valgus (fusion of the big toe), quintus varus (deformation of the little toe) and hammer toes or for everybody looking for a soft and flexible shoe.

Thanks to the Lycra finish, this shoe forms to any foot. This closed model gives extra protection and is as comfortable as a slipper, for you to enjoy.

The *Move* collection has an ultralight design with antistatic properties and a slip resistant outsole. The inner lining in Coolmax[®] keeps your feet cool and draws perspiration away from the skin. The anatomical shaped foot bed and outsole, that at any point touches the ground, ensures a healthy support of the foot. This model has a 3 cm or 1.18 inch heel.



Anais

CE-standard
CE EN 20347 certified.



Coolmax®-lining

This technical material keeps your feet cool and draws perspiration away from the skin.



Easy maintenance

The shoe can easily be cleaned with a damp cloth (not the parts in Lycra).



Shock absorbing

The midsole in EVA guarantees shock absorption.



Lycra

The shoe exists mainly of very flexible lycra. This ultra soft material adjusts to any foot.



Ultra light

The midsole in EVA is very light, flexible and shock absorbing. The average shoe weight is 8.81 oz or 250 gram.



Renewable insole

Renewable insole with Coolmax®. You can easily replace the insole regularly with our ultra comfortable insole OXYFOAM or use your own orthopedic insoles.



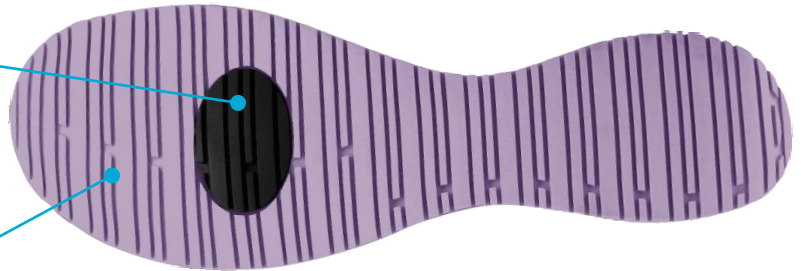
Anti-static ESD

The shoe features a plug that improves the dissipation of static electricity and meets the ESD standard.



Slip resistant SRC

The rubber outsole provides excellent grip, both on wet and dry floors and complies with the SRC standard.



Usage

Suitable for those who walk and stand for a long time daily. So recommended for:

- Healthcare professionals
- Nurses and caregivers
- Wellness and beauty center professionals
- Homecare

Do not use to accompany patients into the shower.

Sizes

EU	36	37	38	39	40	41	42
UK	3.5	4	5	5.5	6.5	7	8
US	6	6.5	7.5	8	9	9.5	10.5