



Roy



ROY-WHT



ROY-NAV

The model ROY is a sporty, closed slip-on, fully adapted to the needs of healthcare professionals. The elastic band at the instep ensures a firm fit of the shoe.

The *Motion* collection is an ultra light design with antistatic properties and a slip resistant outsole. The breathable inner lining in Coolmax® keeps your feet cool and draws perspiration away from the skin. The outer material is leather and can easily be cleaned with a damp cloth. The anatomical shaped foot bed and outsole that at any point touches the ground, ensures a healthy support of the foot. This model has a 1.18 inch or 3 cm heel.



Roy

CE-standard
CE EN 20347 certified.



Coolmax®-lining

This technical material keeps your feet cool and draws perspiration away from the skin.



Easy maintenance

The shoe can easily be cleaned with a damp cloth.



Shock absorbing

The midsole in EVA guarantees shock absorption.



Leather
The outside of the shoe is leather.



Ultra light

The midsole in EVA is very light, flexible and shock absorbing. The average shoe weight is 8.81 oz or 250 gram.



Renewable insole

Renewable insole with Coolmax®. You can easily replace the insole regularly with our ultra comfortable insole OXYFOAM or use your own orthopedic insoles.



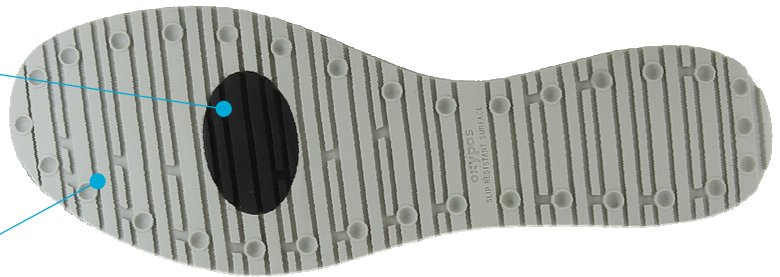
Anti-static ESD

The shoe features a plug that improves the dissipation of static electricity and meets the ESD standard.



Slip resistant SRC

The rubber outsole provides excellent grip, both on wet and dry floors and complies with the SRC standard.



Usage

Suitable for those who walk and stand for a long time daily. So recommended for:

- Healthcare professionals
- Nurses and caregivers
- Wellness and beauty center professionals
- Homecare

Do not use to accompany patients into the shower.

Sizes

EU	39	40	41	42	43	44	45	46
UK	5,5	6,5	7	8	9	9,5	10,5	11
US	6,5	7,5	8	9	10	10,5	11,5	12