



LILIA-LIC



COOLMAX®



CLEAN WITH A  
MOIST CLOTH



ULTRA LIGHT



STANDARD



RENEWABLE  
INSOLE



ANTISTATIC  
ESD



SHOCK  
ABSORBING



SLIP  
RESISTANCE  
SRC (SRA+SRB)



LILIA-LBL



LILIA-LGN

The model **LILIA** is a sporty, closed shoe, fully adapted to the needs of the healthcare professionals. The adjustable velcro strap on top of the shoe ensures a perfect fit. The toes are extra protected by the piece of leather on the toe tip.



LILIA-FUX



LILIA-WHT

The *Move* collection are ultra light designs with antistatic properties and a slip resistant sole. The inner lining in Coolmax® keeps your feet cool and draws perspiration away from the skin. The outer material is leather and can easily be cleaned with a damp cloth. The anatomical shaped foot bed and outsole that at any point touches the ground, ensures a healthy support of the foot. This model has a 1.18 inch or 3 cm heel.



LILIA-FLR



# Lilia

## CE-standard

CE EN 20347 certified.



## Coolmax®-lining

This technical material keeps your feet cool and draws perspiration away from the skin.



## Easy maintenance

The shoe can easily be cleaned with a damp cloth.



## Shock absorbing

The midsole in EVA guarantees shock absorption.



## Leather

The outside of the shoe is leather.



## Ultra light

The midsole in EVA is very light, flexible and shock absorbing. The average shoe weight is 8.81 oz or 250 gram.



## Renewable insole

Renewable insole with Coolmax®. You can easily replace the insole regularly with our ultra comfortable insole OXYFOAM or use your own orthopedic insoles.



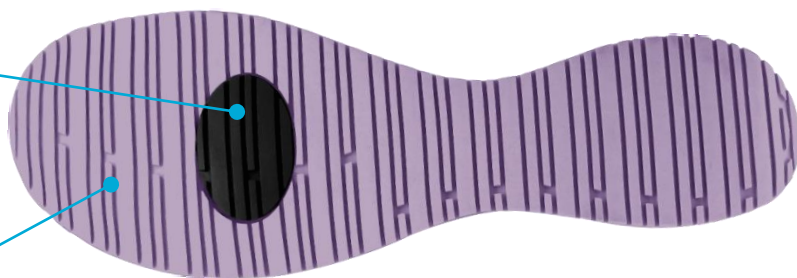
## Anti-static ESD

The shoe features a plug that improves the dissipation of static electricity and meets the ESD standard.



## Slip resistant SRC

The rubber outsole provides excellent grip, both on wet and dry floors and complies with the SRC standard.



## Usage

Suitable for those who walk and stand for a long time daily. So recommended for:

- Healthcare professionals
- Nurses and caregivers
- Wellness and beauty center professionals
- Homecare

Do not use to accompany patients into the shower.

## Sizes

EU	36	37	38	39	40	41	42
UK	3.5	4	5	5.5	6.5	7	8
US	6	6.5	7.5	8	9	9.5	10.5